



1 - 4 Cranworth Mews,  
La Vallee Des Vaux, JE2 3GB

Asking price £825,000



FREEHOLD - Reside are pleased to present this selection of exceptional luxury townhouses, thoughtfully designed across four floors of spacious and elegant living.

This townhouse is part of a new development with only twelve units. 1 - 4 are beautifully presented and feature three double bedrooms, each with its own stylish en-suite, ensuring ultimate convenience and privacy.

The modern open-plan living and kitchen area is bright and spacious, seamlessly extending onto a private balcony.

The stunning kitchen has all new built in appliances, breakfast bar and large American style fridge.

There are balconies on both sides of the building as well as a private roof terrace offering a secluded space to relax and entertain in the sunshine.

Situated in the sought-after location of St Helier, this property benefits from excellent transport links and nearby amenities, schools and ideal for walks along the green lanes.

Electric car chargers are provided within all the garages.

RES316



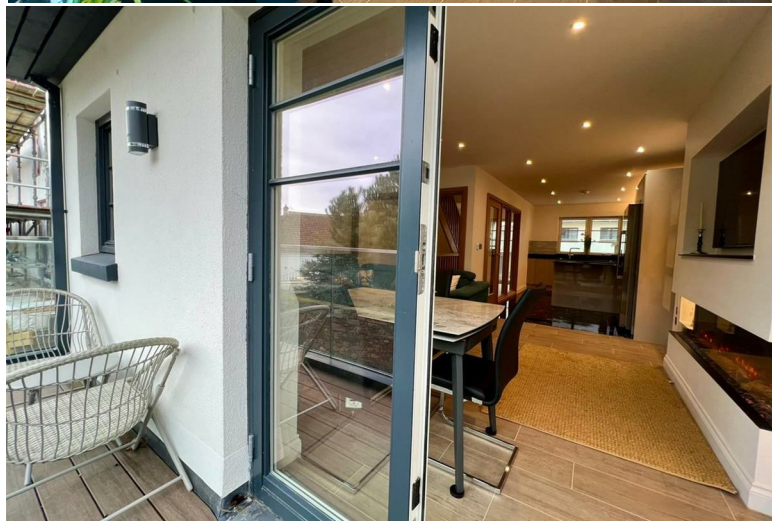
reside.je



info@reside.je



07797737773



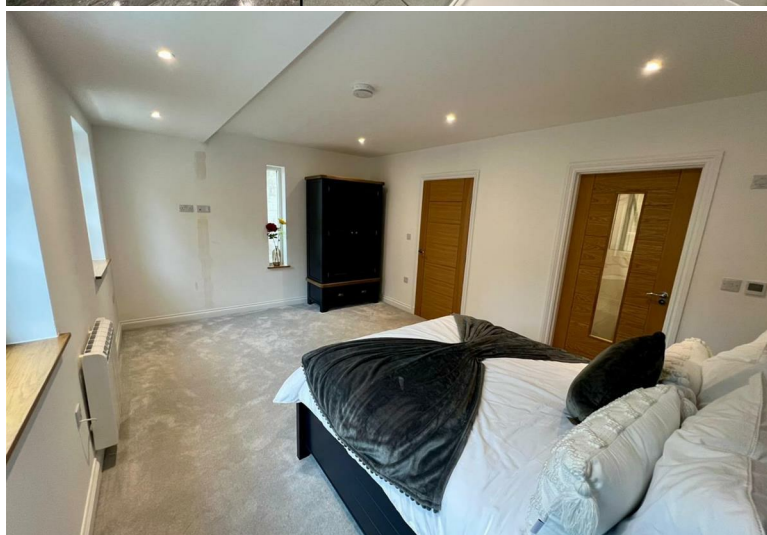
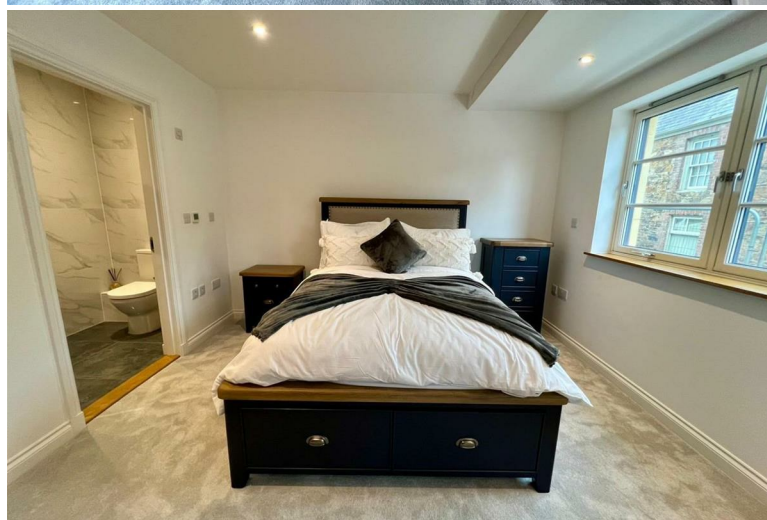
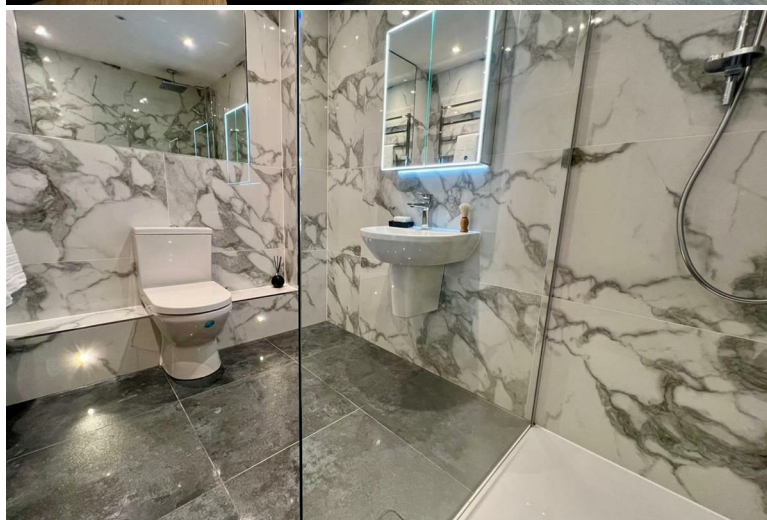
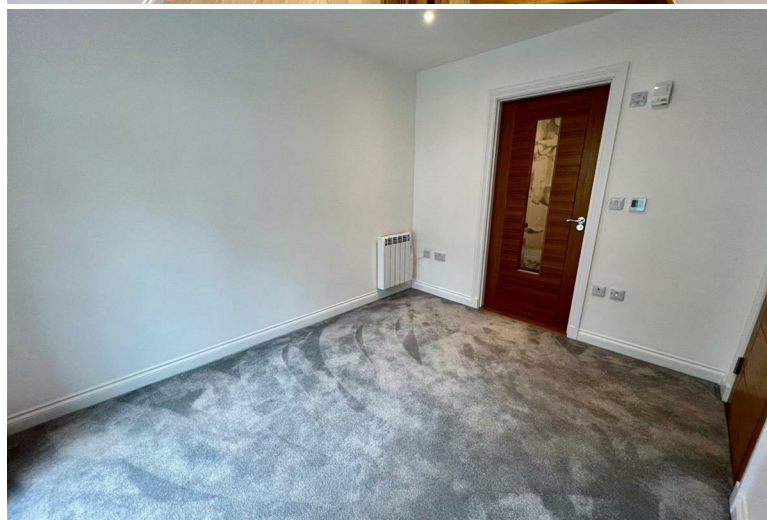
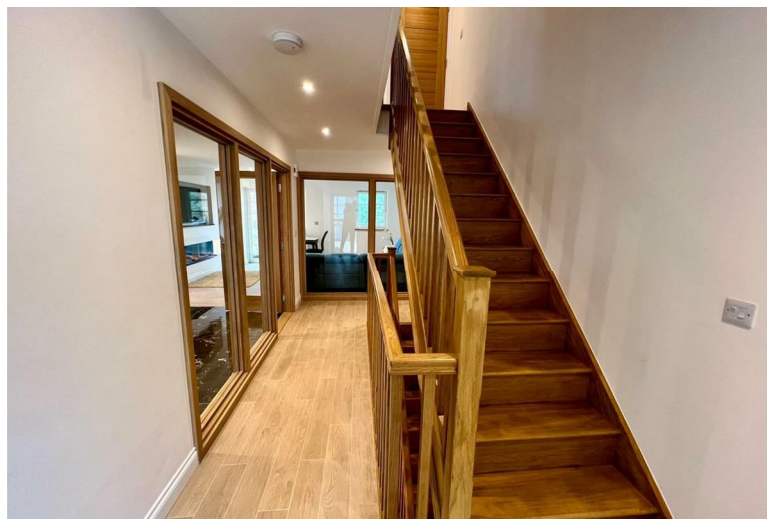
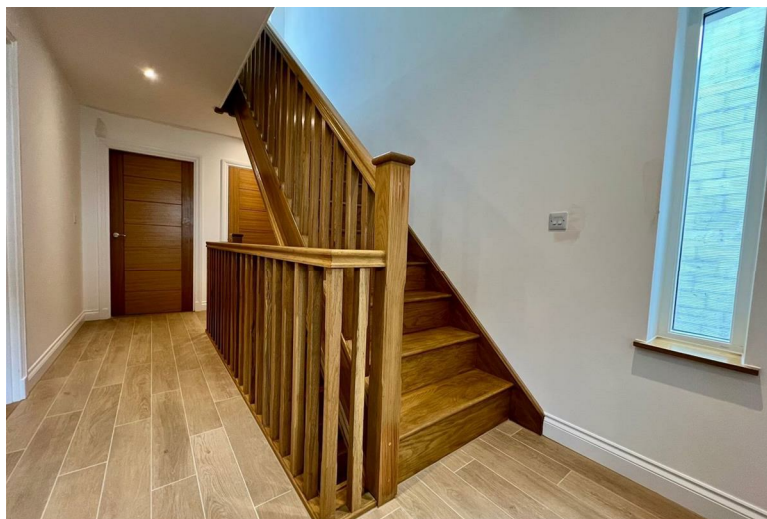
reside.je



info@reside.je



07797737773



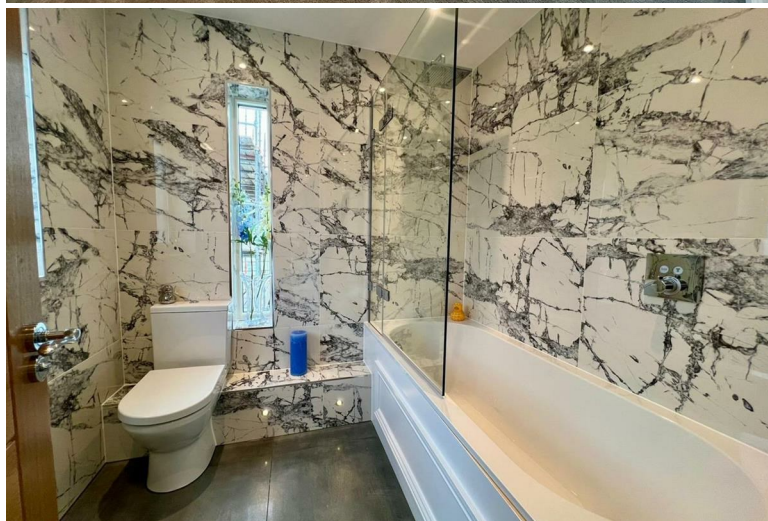
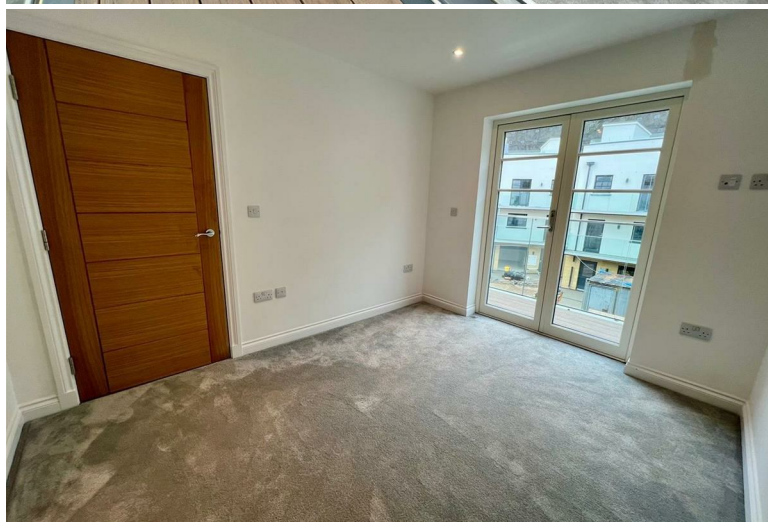
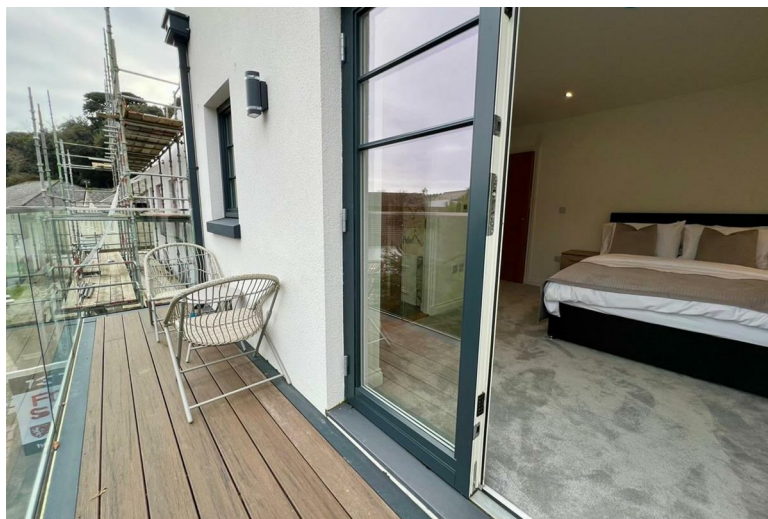
reside.je



info@reside.je



07797737773



reside.je



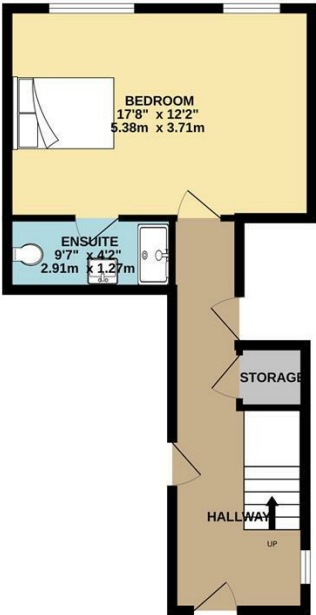
info@reside.je



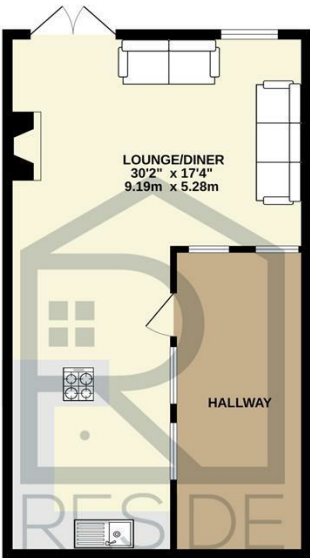
07797737773

Floor Plan

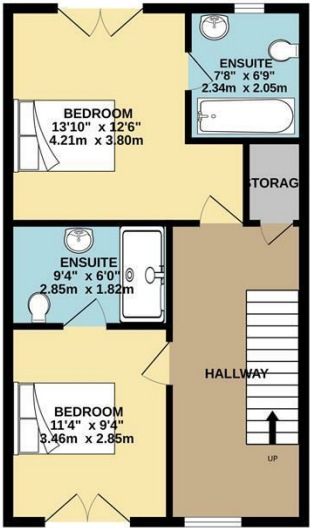
FLOOR 1  
402 sq.ft. (37.3 sq.m.) approx.



FLOOR 2  
515 sq.ft. (47.9 sq.m.) approx.



FLOOR 3  
511 sq.ft. (47.5 sq.m.) approx.



TOTAL FLOOR AREA: 1429 sq.ft. (132.7 sq.m.) approx.  
Whilst every attempt has been made to ensure the accuracy of the floorplan contained here, measurements of doors, windows, rooms and any other items are approximate and no responsibility is taken for any error, omission or mis-statement. This plan is for illustrative purposes only and should be used as such by any prospective purchaser. The services, systems and appliances shown have not been tested and no guarantee as to their operability or efficiency can be given.  
Made with Metropix ©2025



reside.je



info@reside.je



07797737773

## Key Information

- Three bedrooms
- Three bathrooms
- Brand new development
- Private roof terrace
- High-spec finish
- Parking
- Garage with car charging point

## Directions

